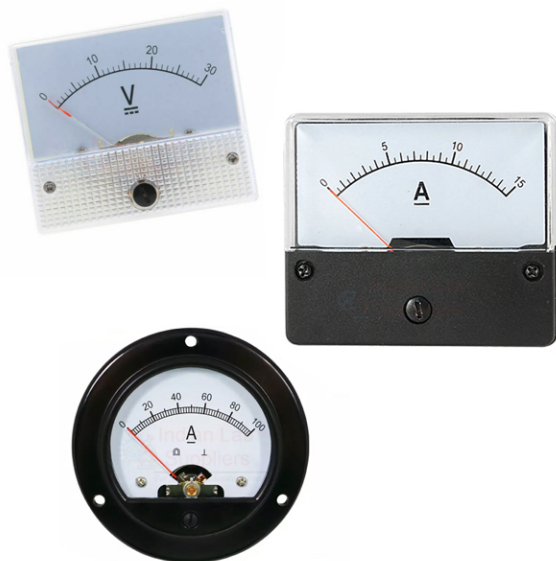


Product Code . ILS-LM-10821

Panel Meters



Description

Case: Clear Trasparent case with white ABS base

Scale Length: 50 mm (approx.) with knife edge pointer with or without anti parallax mirror scale.

Accuracy: ± 2 F.S.D.

Over All Size: 65x65mm Square approx.

Case: Unbreakable, moulded, ABS Plastic Black Case

Scale Length: 50mm (approx.) with knife edge pointer with or without anti parallax mirror scale.

Accuracy: ± 2 F.S.D.

Over All Size: 80mm round approx.

Case: Clear Trasparent case with white ABS base

Scale Length: 60 mm (approx.) with knife edge pointer with anti parallax mirror scale.

Accuracy: ± 2 F.S.D.

Over All Size: 80x80mm square

Case: Unbreakable, moulded, ABS Plastic Black Case with clear transparent front window.




Scale Length: 85mm (approx.) with knife edge pointer with or without anti parallax mirror scale

Accuracy: ± 2 F.S.D.

Over All Size: 80x100mm Square approx.

Contact jLab for your Educational School Science Lab Equipments. We are best science educational equipments, science educational instruments, science lab equipments manufacturer, science laboratory instruments exporter, scientific educational equipments, scientific educational lab equipment in india.

Indian Lab Suppliers,

Direct Contact Details  +91-8569909696  sales@indianlabsuppliers.com
 www.indianlabsuppliers.com